



# Module Inspection Methods On-site

PV Magazine Quality Roundtable  
Munich, Germany

Steven Xuereb  
Head of Business Unit PV Systems  
PI Photovoltaik Institut Berlin

## Aerial Drone

☰ Defect ID: 29

Defect Type:	Multiple Hot Cells
Ec:	1231.21W/m <sup>2</sup>
$\Delta T_n$ ( $\Delta T_m$ ):	31.02°C (39.00)

Source: Above Surveying

## Hand-held

42,5 °C

— 40,0

— 37,5

— 35,0

— 32,5

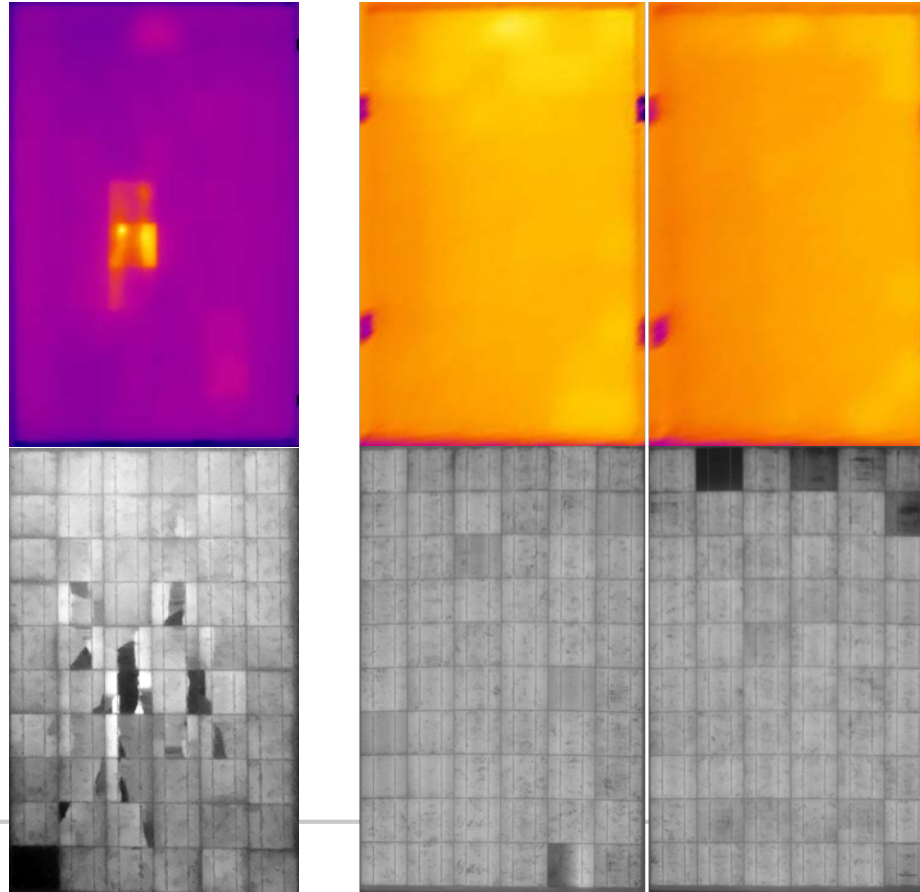
— 30,0

— 27,5

26,4 °C

Source: PI-Berlin

# Additional Value with Electroluminescence





**Your independent solar advisers!**

**Contact us:**

PI Berlin  
Steven Xuereb  
[xuereb@pi-berlin.com](mailto:xuereb@pi-berlin.com)  
[www.pi-berlin.com](http://www.pi-berlin.com)