

400W⁺

Small in Size, Big on Power

Vertex S



Requirements of Residential and Commercial Photovoltaic Systems

Vertex S

Max. Power

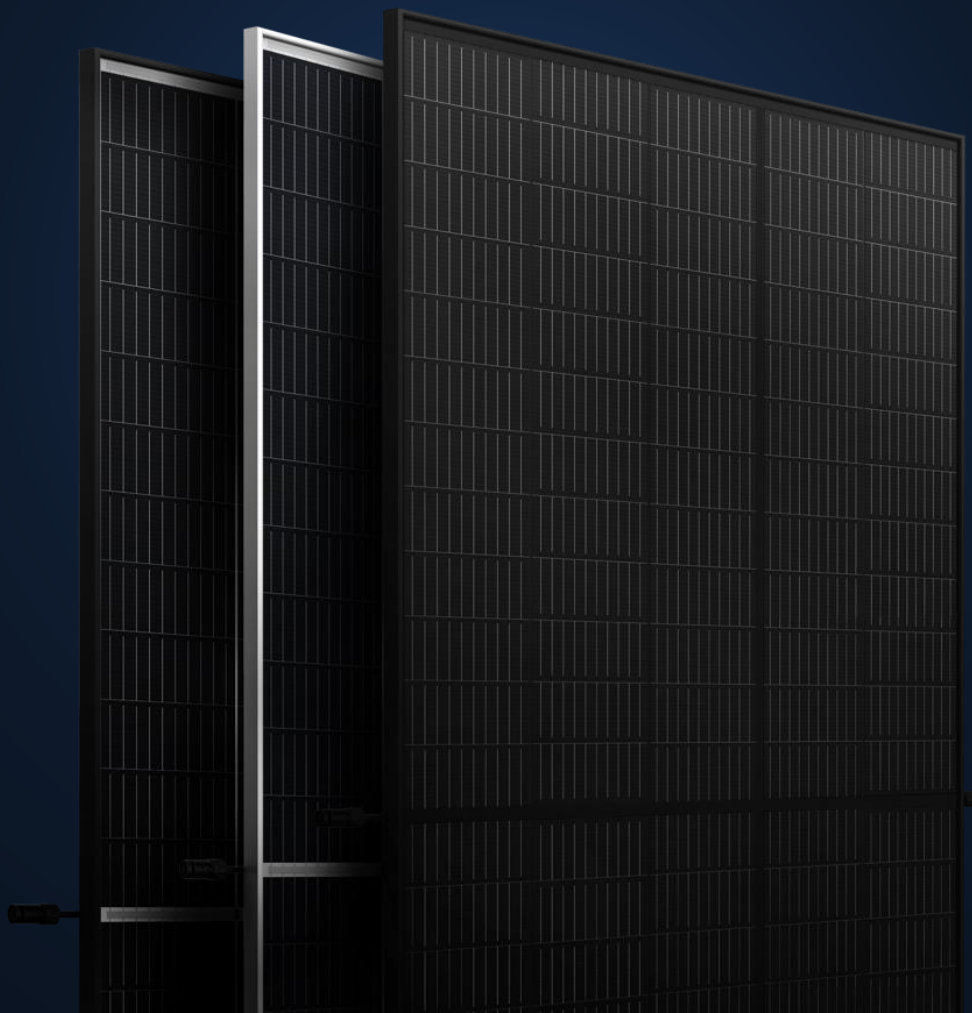
405W

- Size: 1754*1096*30mm
- Weight: 21kg
- Temp coeff.: -0.34%/K
- 1st year degradation: 2%
- Annual degradation : 0.55%
- Product Workmanship Warranty :
15 years
- Power Warranty: 25 years

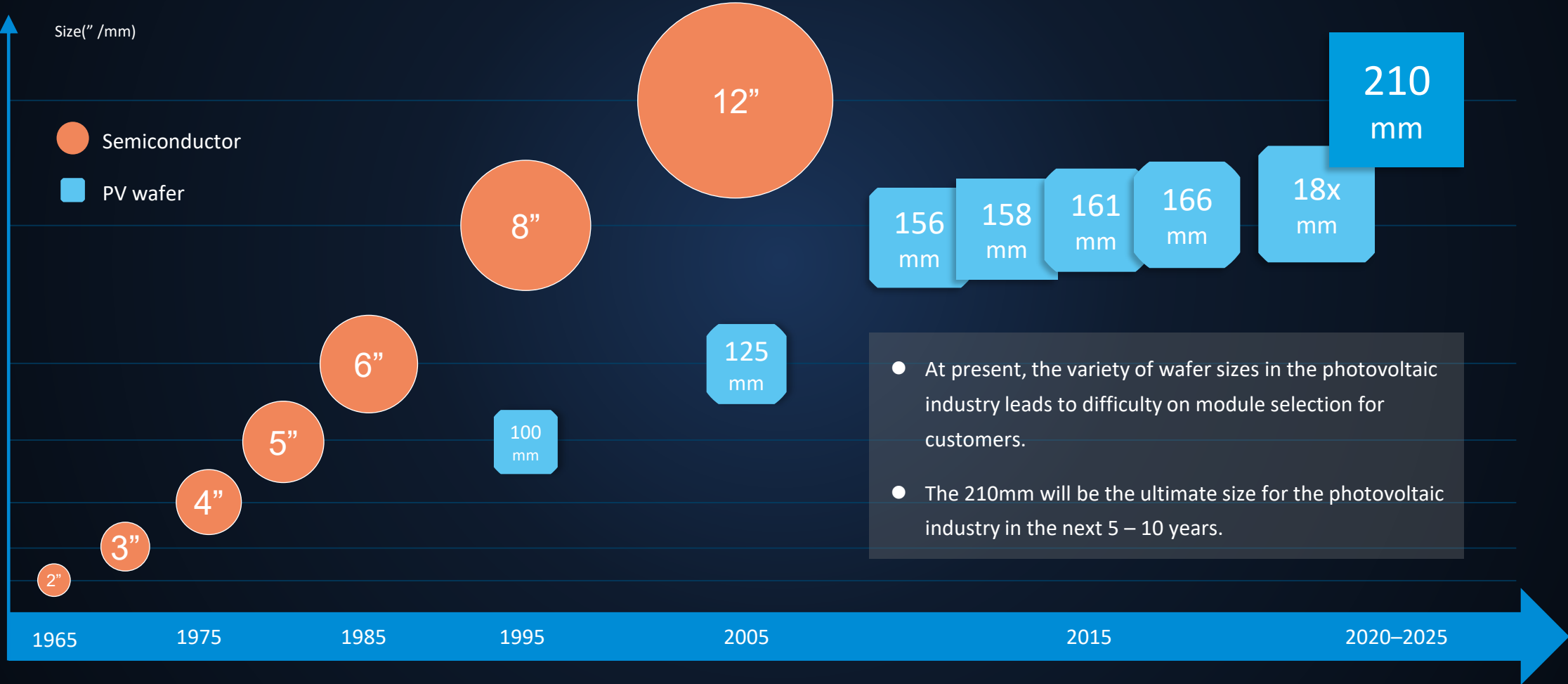
Max. Eff.

21.1%+

- 210mm cells
- Multi-busbar
- Non-destructive cutting
- High-density interconnection
- 5*8 layout
- 1/3-cut cells



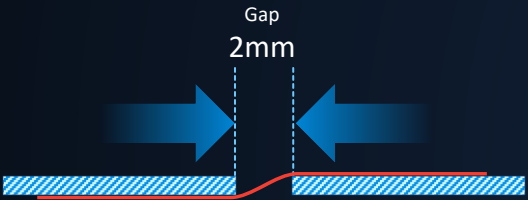
Evolution of PV Wafer Sizes



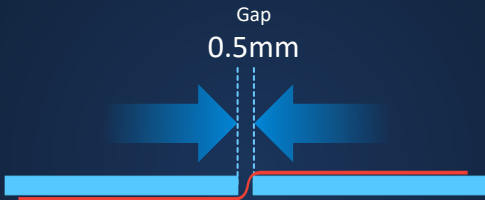
Optimal Design

with high efficiency and high quality

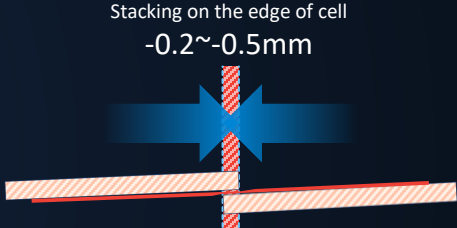
Traditional module



High-density module

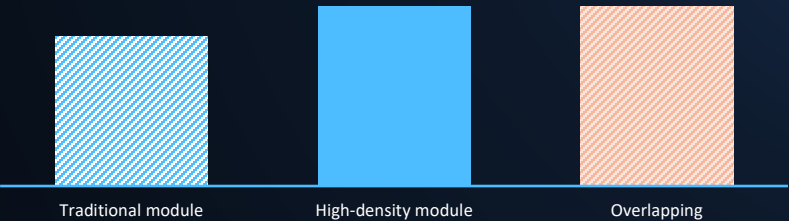


Overlapping

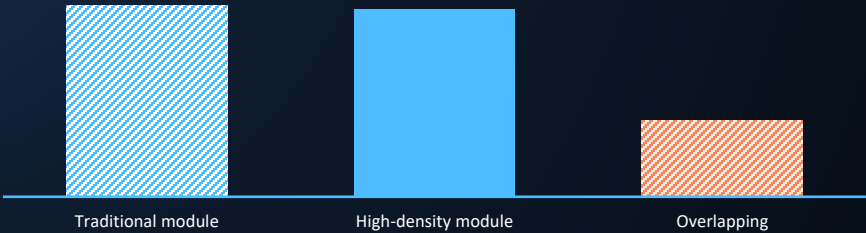


Balance

Module Efficiency



Module Yield



Small in Size, Big on Power

Small Form Factor, High Power



1.75m module size
Up to **60W** higher power!

1754mm

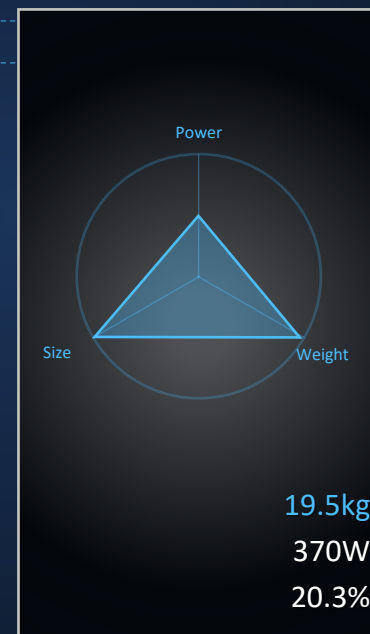
1664mm

1664x995mm



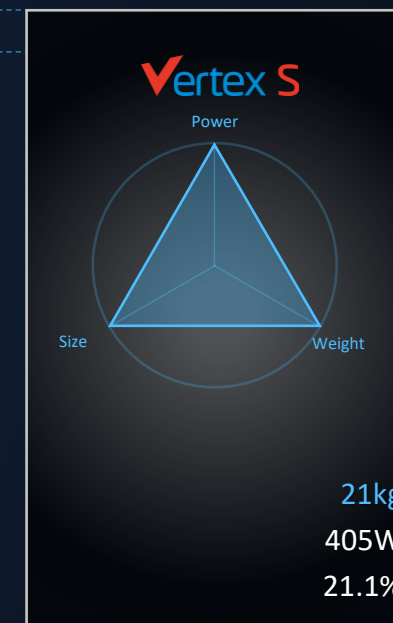
158
60

1763x1038mm



166
60

1754x1096mm

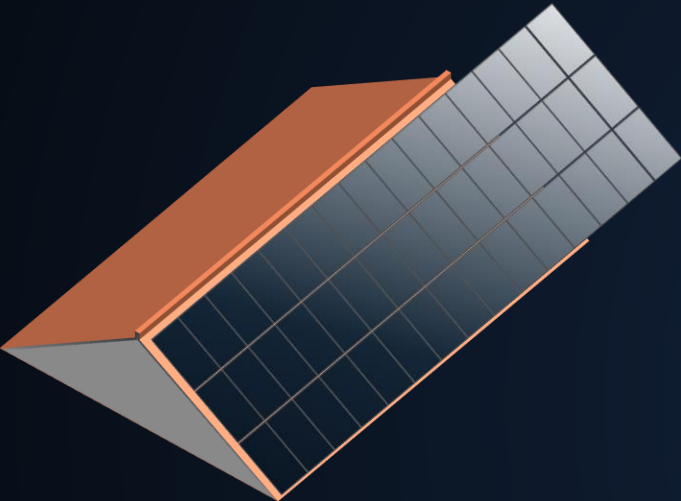


210
40

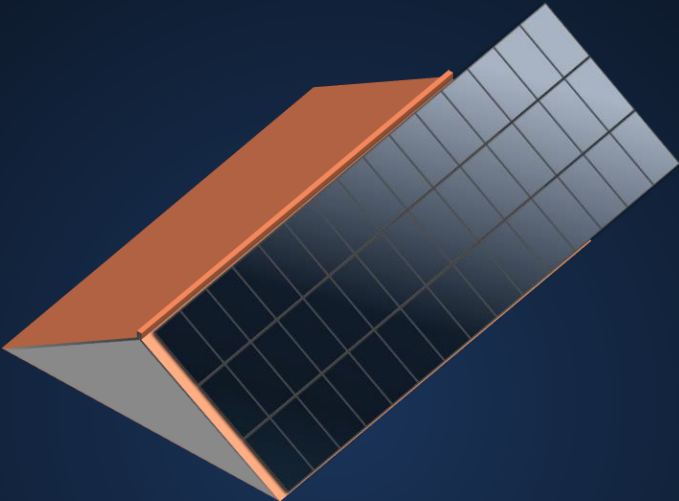
Small in Size, Big on Power



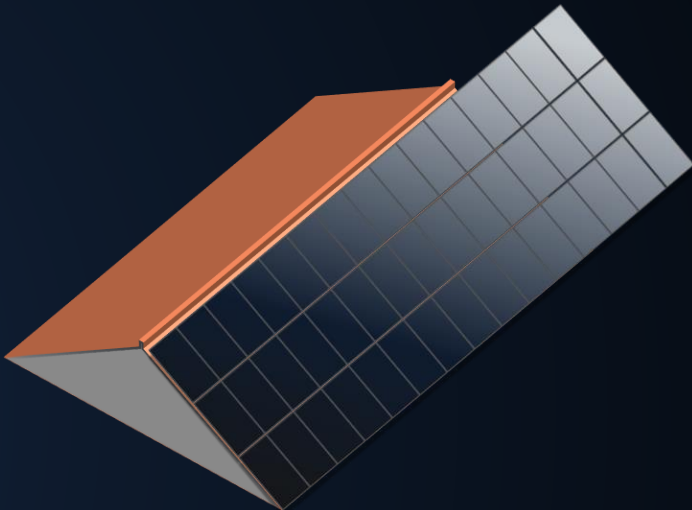
More Capacity on Same Roof Size



158 (60)
340W
48pcs (3*16)
16.32 kW
256.3 MW·h



166 (60)
370W
45pcs (3*15)
16.65 kW
289.3 MW·h



Vertex S
405W
45pcs (3*15)
18.23 kW
316.7 MW·h

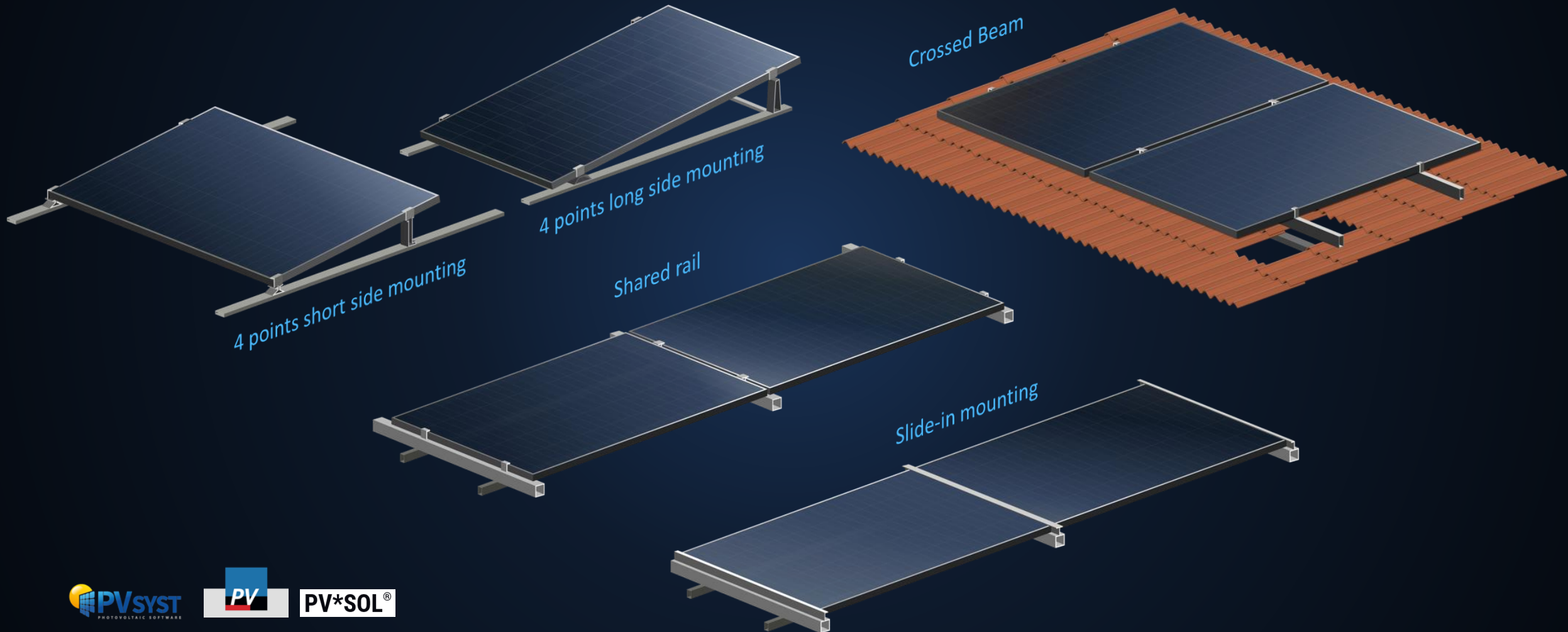
Vertex S generates 23% more power than 158 60 mono and 10% more than 166 60 mono in 25 years.

Sample calculation based on Jinan, ShanDong Province, China

Universal Solution for Residential and C&I Roofs

Diverse Installation Solutions. Flexible for System Deployment

TrinaSolar



PV*SOL®

System Planning Tools ready for Vertex S

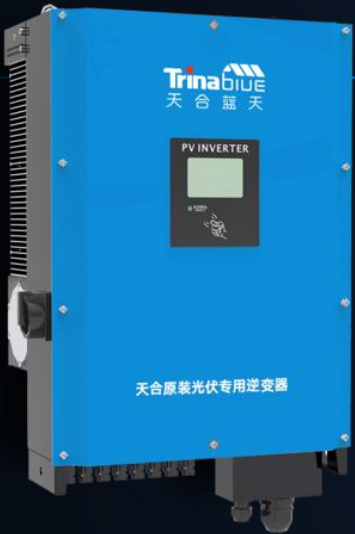
Universal Solution for Residential and C&I Rooftops

Excellent Inverter & Optimizer Compatibility



I_{sc} : 12.34A V_{oc} : 41.4V

166 60 370W I_{sc} : 11.3A V_{oc} : 41.3V



Durability and Reliability



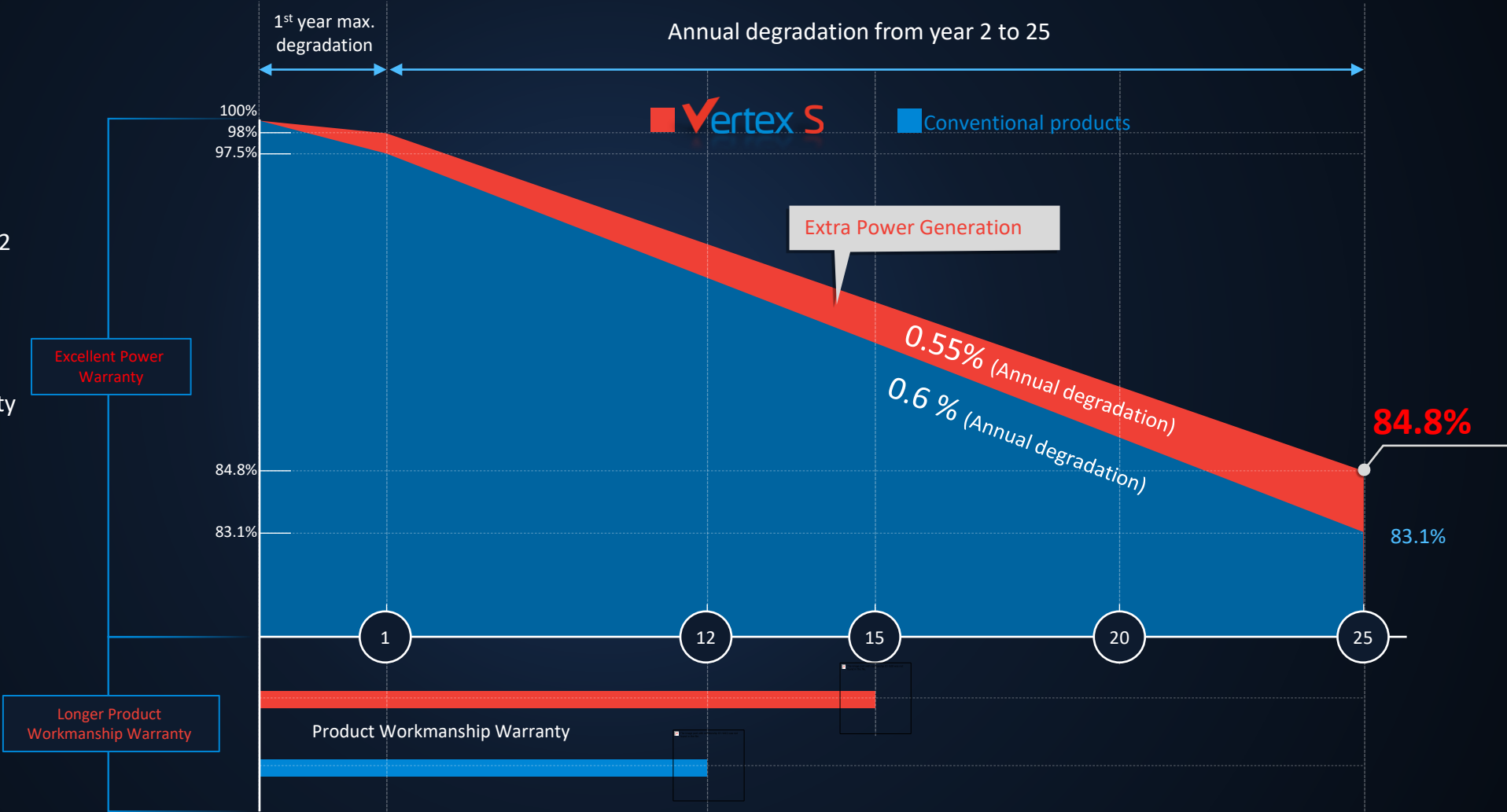
2%
1st year max. degradation

0.55%
Annual degradation from year 2 to 25

15Y
Product Workmanship Warranty

Snow load
Max 6,000Pa

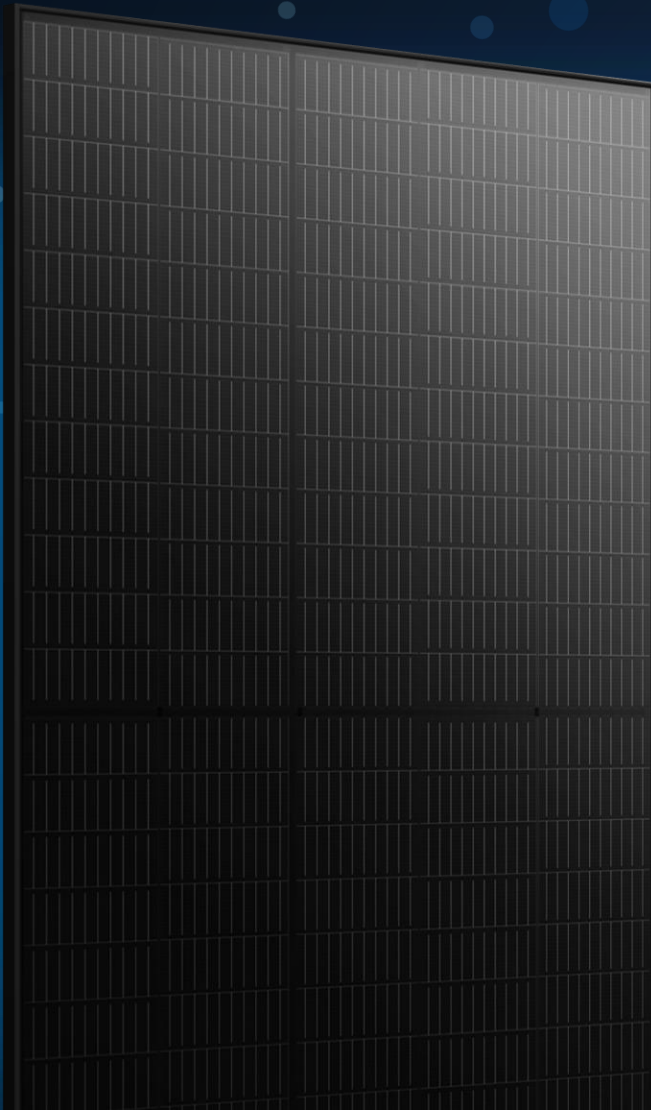
Wind load
Max 4,000Pa



Aesthetic Black Product

Designed for High-end Residential Rooftop

Trina solar



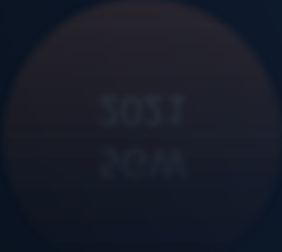
Outstanding Visual Appearance

- Designed with aesthetics in mind
- Excellent cell color control by dedicated cell blackening treatment and machine selection
- Thinner wires that appear all black at a distance

Vertex S

Capacity Plan of Vertex S

Mass Production
Start in Jan, 2021



Vertex Platform – Vertex Family




Vertex
UP to
500W




Vertex
UP to
550W



Vertex S
UP to
405W



Vertex
UP to
600W



Vertex
UP to
660W

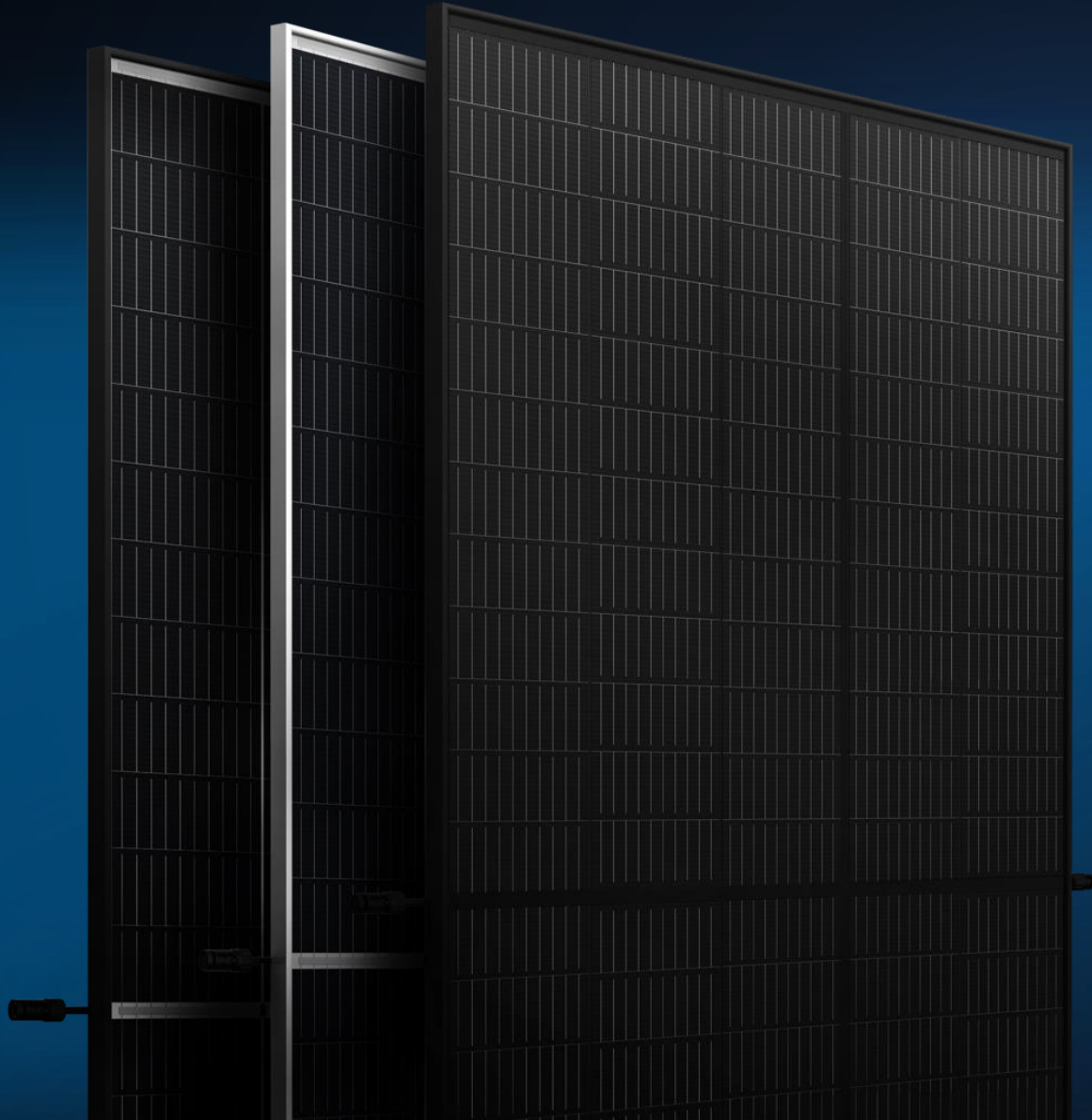
2020 July

2020 Sep

2021 Jan

2021 Q2

Designed for Rooftop Photovoltaic Systems



Max. Power

405W

Max. Eff.

21.1%+

Small in Size – Big on power

+

Universal Solution for Residential and C&I Rooftops

+

High Reliability

+

Outstanding Visual Appearance

Three large, dark solar panels are shown on the left side of the image, arranged in a slightly overlapping, vertical stack. They have a grid-like pattern of cells. The background is a dark blue gradient with some light blue dots in the upper left corner.

Thanks for watching !

The logo for "Vertex S", featuring a large red checkmark-like "V" followed by the word "ertex" in blue and "S" in red. The logo is reflected below it.

Vertex S