

Packed with Power

- GoodWe leading the trends in Utility Scale solar projects

Ali Bouattour
GoodWe Europe GmbH

Kistlerhofstraße 170, 81379 Munich, Germany
+49 89 7807289-0
sales@goodwe.com
www.goodwe.com



How is the inverter industry coping with the trends and requirements of utility scale solar projects?








Prominent trends:

- String inverters are increasing their market share
- 1500V DC systems are becoming a de facto standard
- High-power modules (500Wp+) are on the rise
- Floating PV offers new opportunities
- Challenging geographic areas have become accessible for PV (e.g. hilly terrains)
- More and more old installations require revamping
- Grid operators require grid support functions

String inverters - Packed with Power



	2015~2016	2016~2017	2018~2019	2020	2021
Inverter	17-25 kW	50/60 kW	70/80 kW	100-136 kW	250KW
			 MT G2 Series	 HT Series	 HT Series
MV station	1 MVA	1.6 MVA	2 MVA	3 / 6 MVA	3 / 6 MVA

Benefits of increased power of string inverters



Typ. central inverter
Power density: ~0.2 W/l
Weight: 3400kg



GoodWe GW250K-HT
Power density: 1 W/l
Weight: 105kg

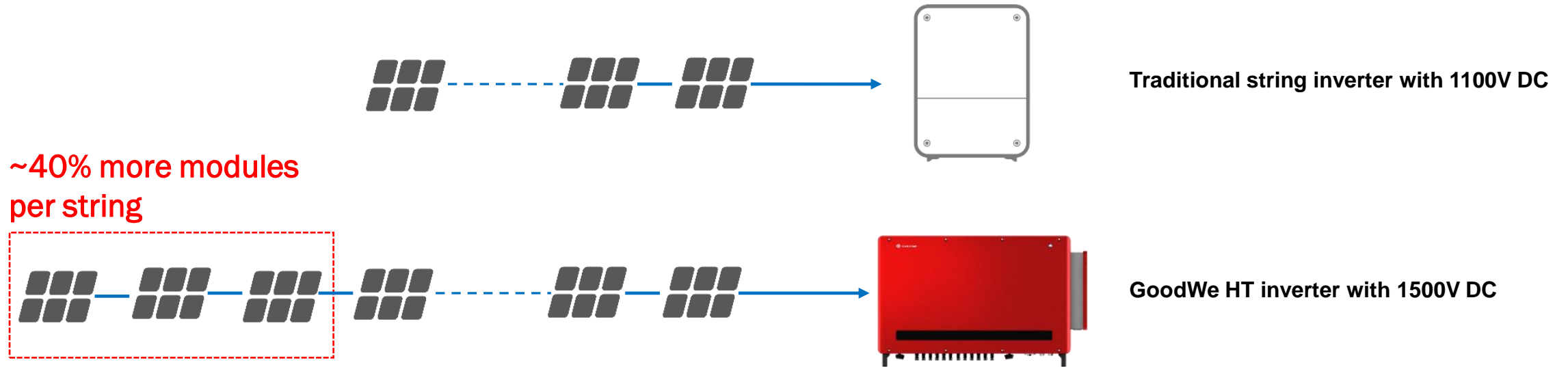
Shrinking CAPEX difference vs. central inverters:

- Fewer string inverters required compared to former generations
- Easier transportation, construction and installation
- No DC boxes
- Higher usage of ground surface

Increasing advantages for OPEX vs. central inverters:

- String level monitoring
- Remote O&M - IV curve diagnosis
- Easier maintenance and inverter replacement
- Higher failure detection capabilities
(AFCI, AC terminal temperature, internal humidity...)

1500V DC voltage does not only increase inverter power density...



1500V vs. 1100V

Up to 40% savings of DC cabling costs

1%~2% increase of electricity generation

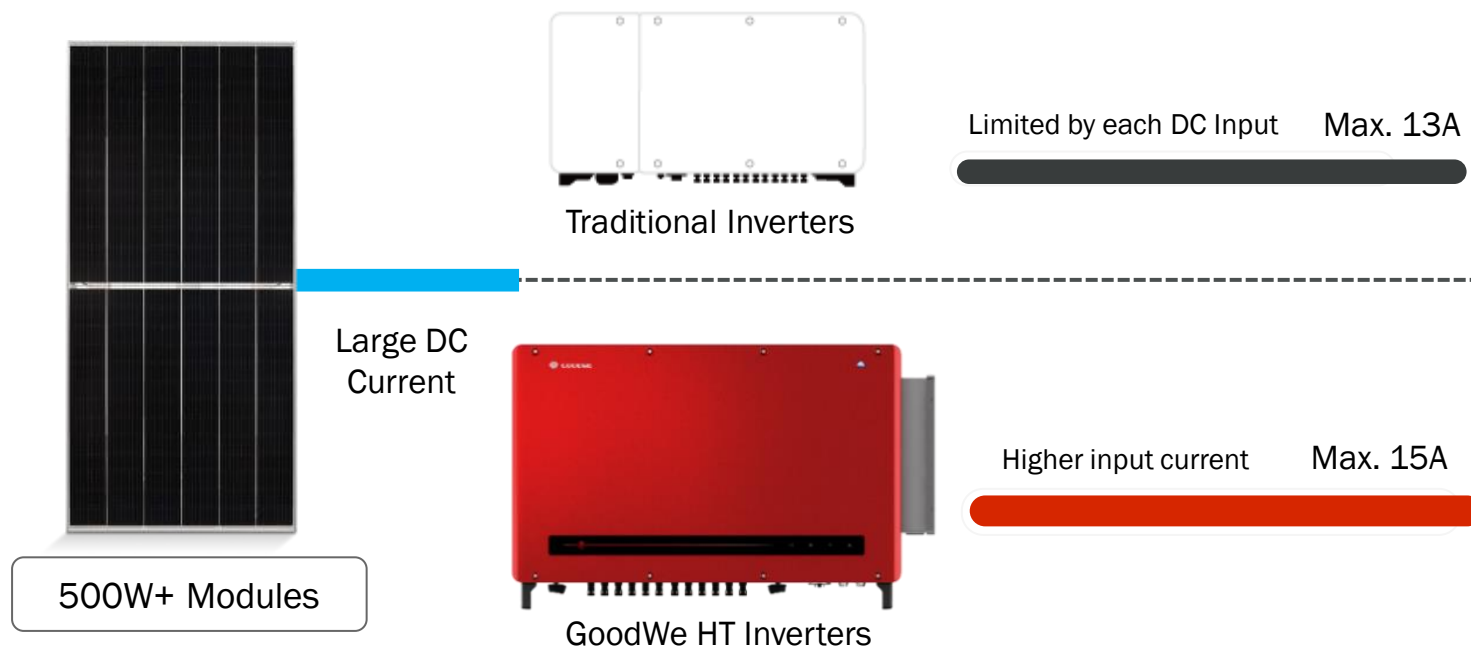
Increased DC power density

HT Series matches the trend of High-power Modules



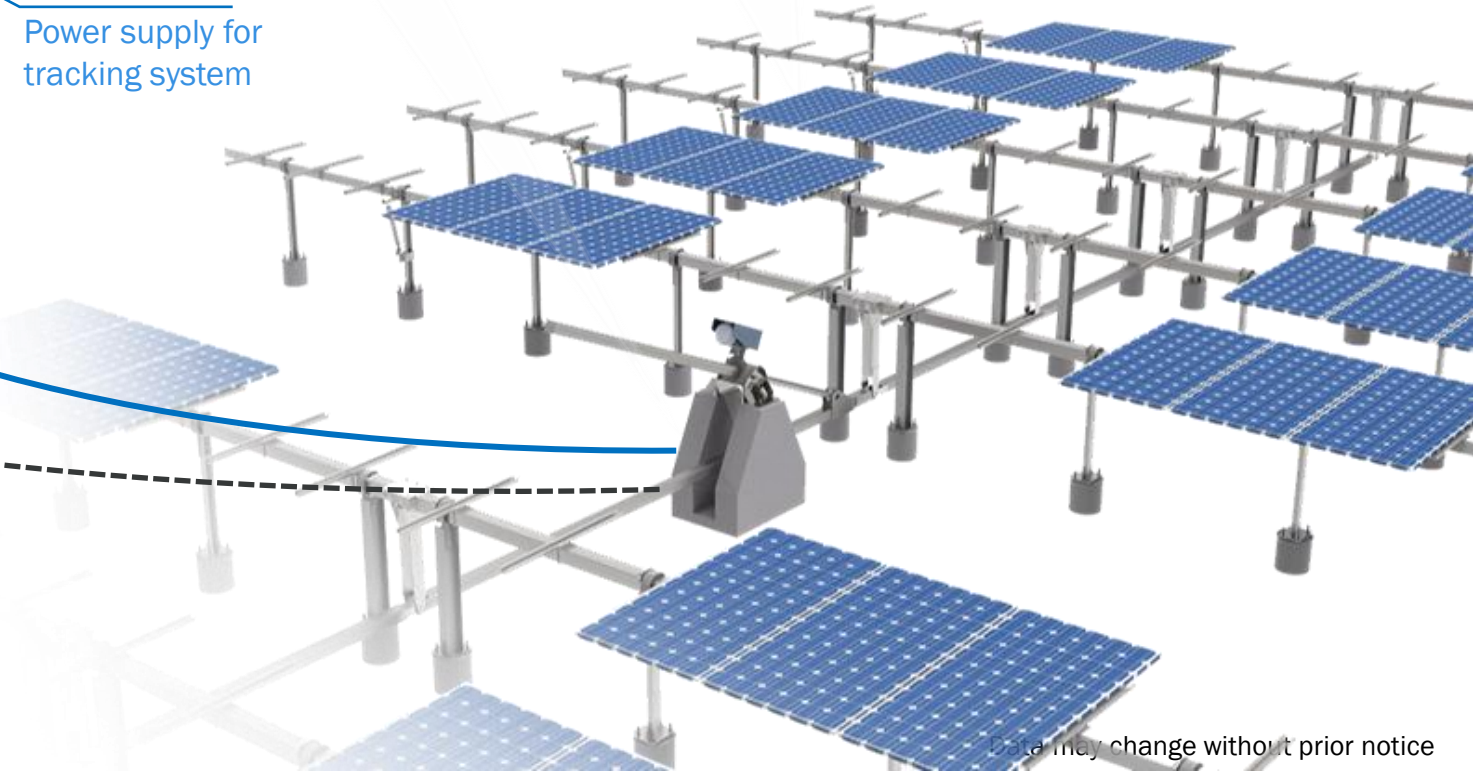
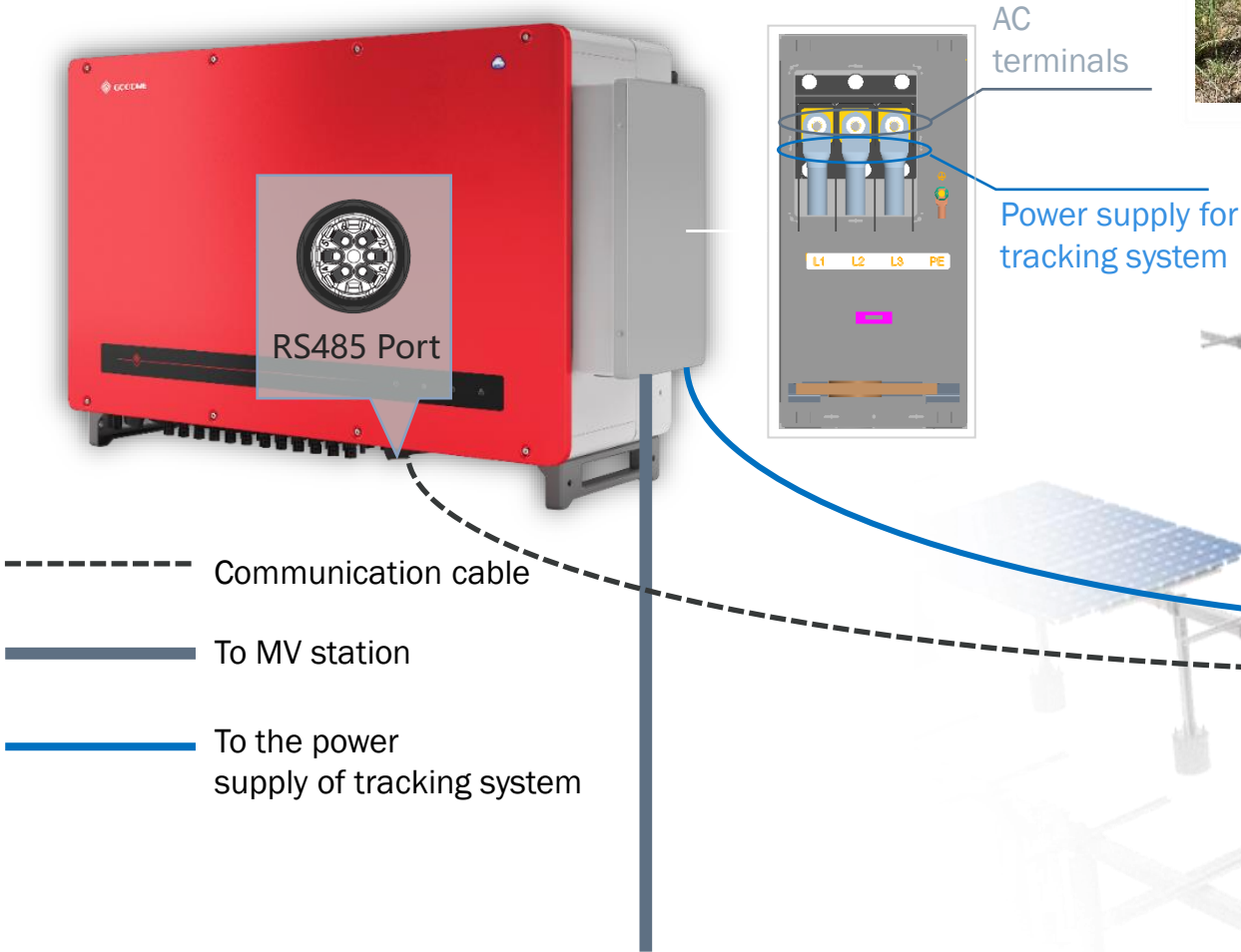
Max. DC input current of **15A** per string of **GoodWe HT** series is the highest among string inverters.

Module Brand	Isc
■ Jinko Tiger Pro	14.1A
■ JA Solar Deep Blue 3.0	13.72A
■ Longi solar Hi-MO5	13.85A
■ Risen Titan	12.5A
■ Trina Vertex	12.17A
■ Canadian Solar HiKu6	13.75~14A

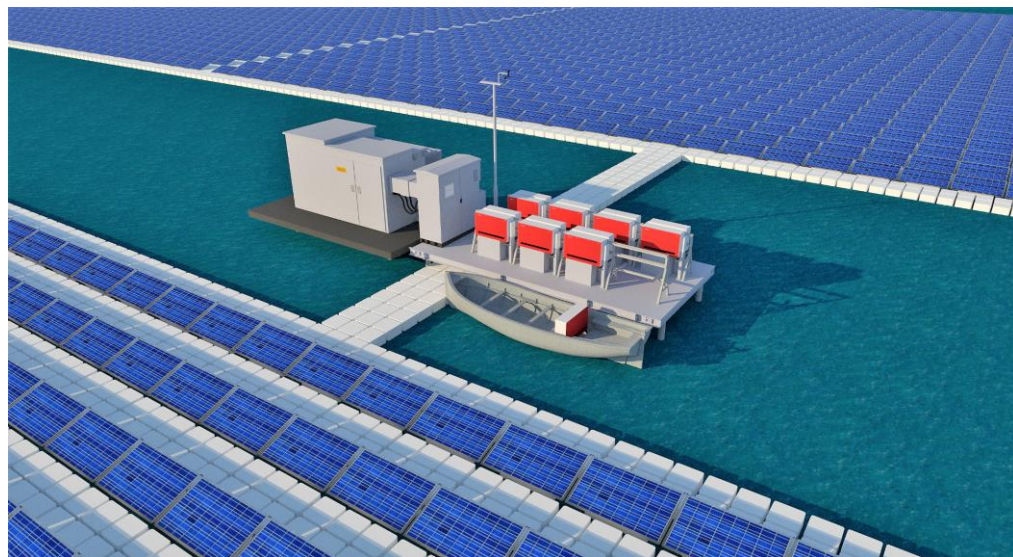


Max. MPPT current **30A** allows for operation with ~18A modules with a high DC/AC ratio.

Integration of tracking systems with HT Series



String inverters solve multiple challenges of floating PV projects



**CENTRALIZED
CONCEPT**



**SIMPLIFIED
O&M**

**HIGH FEATURE
INTEGRATION
LEVEL WITH
STRING
INVERTERS**

Integrated PID-
recovery board.
→ Restoration
effect **~99%**

Internal humidity
detection



IP66 protection for the whole inverter
IP68 protection for cooling fans

PV is possible on challenging grounds thanks to multiple MPPT and IV curve diagnosis



3 MW sub-array with 144 MPPTs



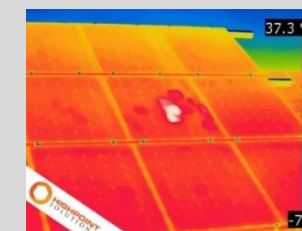
✗ Different tilt and azimuth



✗ Shading



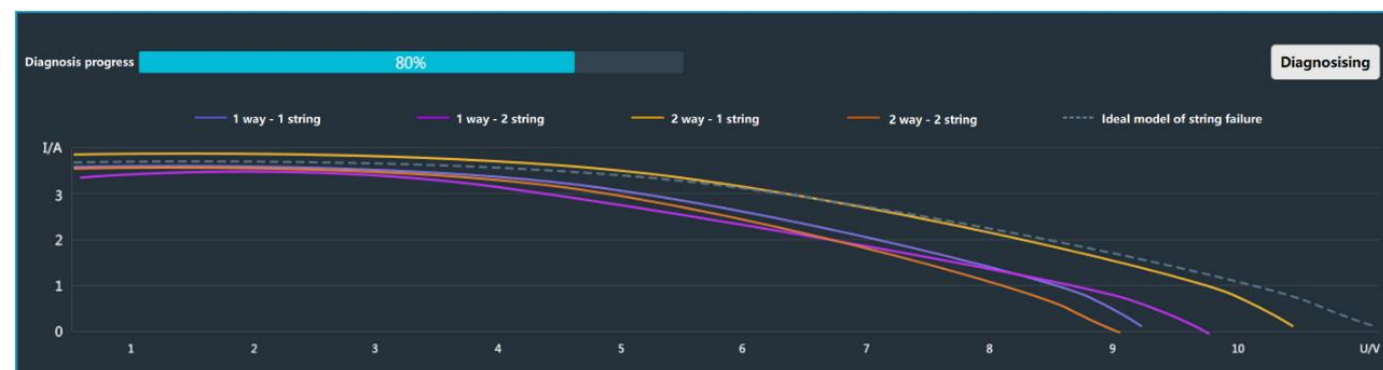
✗ Dirt



✗ Module issues

IV curve diagnosis

- Automated analysis of fault causes
- Automatic generation of analysis reports
- One-button start, saving cost of labour
- Online detection, no interruption of power generation
- 100 MW detection time < 30min

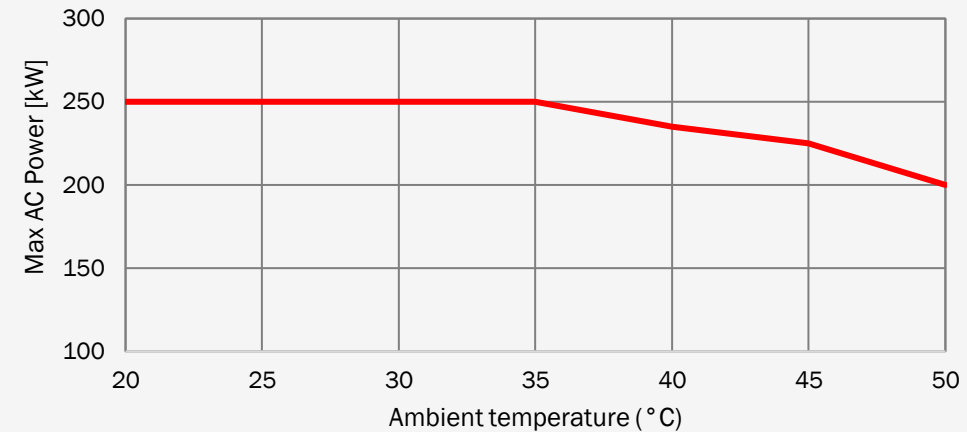


Data may change without prior notice

High temperature adaptability for operation in hot regions

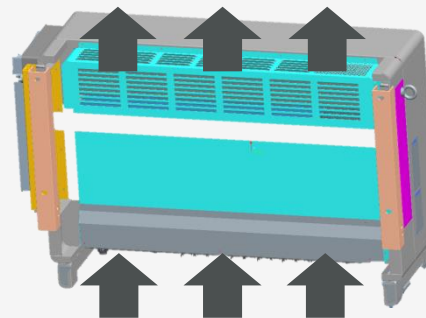


GW250K-HT full power generation
up to 36°C ambient temperature



Excellent heat control design brings:

- Higher power generation
- Extended lifetime of inverter



Optimized heat dissipation path



Set of 6 replaceable fans

Revamping projects come with challenges



- **Timing:**

Replace existing components (e.g. inverters, DC boxes) before they fail, but not too early

- **Inverter size:**

Today's inverters have a significantly different power compared to ~10 years ago

- **Plant design:**

Existing wiring might need to be reworked

- **Communication & monitoring:**

New inverters might not be compatible with old infrastructure

→ String inverters offer high flexibility

→ We help you find the right timing and concept to repower your project

GoodWe Product Portfolio



String inverters

Residential
0.7 – 15 kW

C&I
20 – 120 kW

Utility Scale
136 – 250 kW



Storage inverters

Hybrid
3 – 10 kW

AC coupled
1 – 50 kW



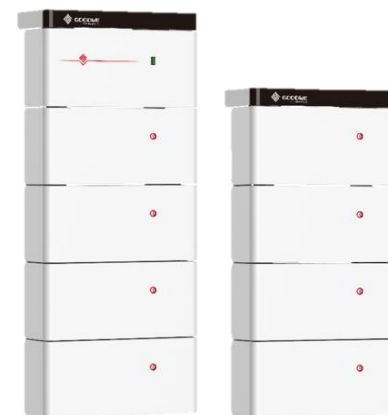
Battery storage

Battery
(LV & HV)

All-in-one
storage

Energy Management & Communications

Main new product launches in 2021



HT Series
100-250 kW inverters
C&I and utility scale

BTC Series
50 kW storage inverter
C&I

ESA Series
All-in-one storage system
Residential

LYNX Batteries
LV and HV batteries
Residential

EHB Series
1ph hybrid inverters
Residential
(South Africa)

THANK YOU

Ali Bouattour
GoodWe Europe GmbH

Kistlerhofstraße 170, 81379 Munich, Germany
+49 89 7807289-0
sales@goodwe.com
www.goodwe.com

