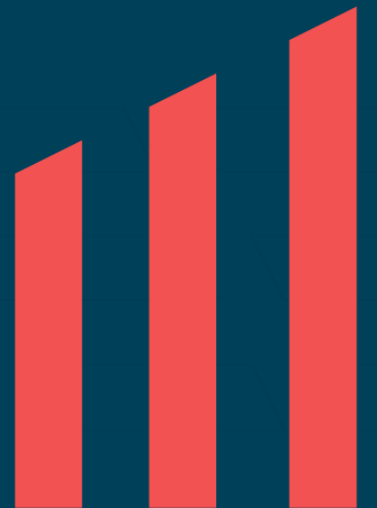




Solar Portfolio Management

The Next Innovation in Project Planning

Philip Lonappan, Software Engineering Manager





Industry Challenges

- No single source of truth
- Too many spreadsheets
- Separate software for each project phase
- Lack of transparency
- Duplication

Atlas- Solar Portfolio Management

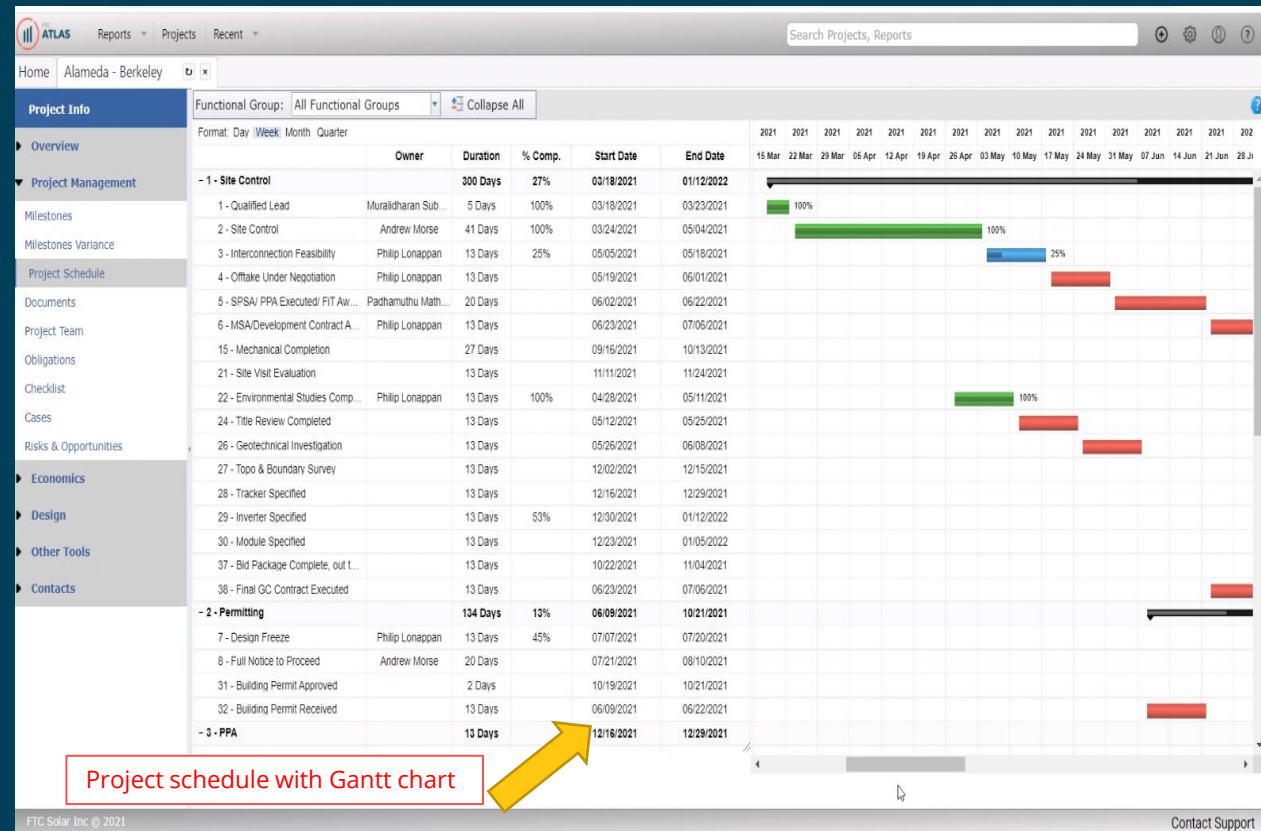
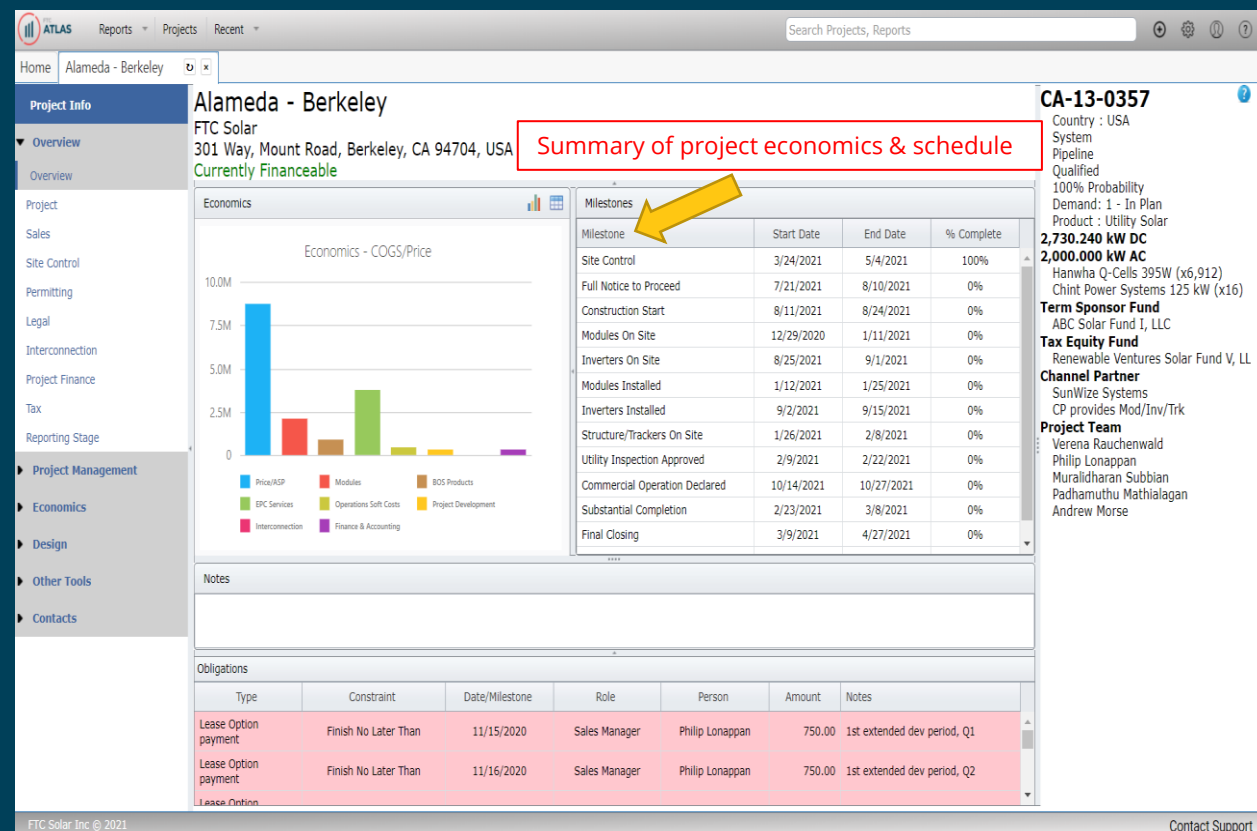
Designed by Solar Professionals for Solar Professionals

- Capability to manage GWs of solar projects
- Streamlines work processes
- Includes elements of CRM software
- Enhances cross functional collaboration



Project Management

- View Deadlines
- Meet Critical Milestones
- Assign and Track Tasks
- Reports
- Document Management



Cash Forecasting & Budgeting

- Create Budget
- Approve Baseline Budget Revisions for Variance Analysis
- Forecast Cashflow
- Generate Financial Reports



ATLAS Reports Projects Recent Search Projects, Reports

Home Alameda - Berkeley

Project Info Overview Project Management Economics Price/ASP PPA/FIT COGS COGS Variance Cash Flows - Forecast Cash Flows - Actuals Forecast - Transactions Budget v Actuals Invoices Payments Commitments/POs Journals Design Other Tools Contacts

Revision: Current Revision New Revision Switch to Previous Revision Clone to Projects Approve Baseline Options Export Data Upload

Revision #54: By Philip Lonappan on 10/26/2021 9:31 AM (Eastern Daylight Time)

Size: 2,730,240 W DC
COGS: \$7,855,118 \$2,8771

COGS line items

COGS/budget amount updated for each line item

Revised module cost per latest guidance 11/5/15 - 330W

Category	Amount	Per W	Fixed Cost?
1 - Modules	\$2,094,640	\$0.7672	
1.1.1 - Modules	\$2,094,640	\$0.7672	
1101 - Modules	\$1,993,075	\$0.7300	
1102 - LOCOM Adjustment; Module Costs	\$27,302	\$0.0100	
1103 - Under Utilization	\$5,734	\$0.0021	
1104 - Module Release Var. Deferral	\$68,529	\$0.0251	
1105 - F&A Module Adjustment Warranty	-	-	
1106 - F&A Module Adjustment Oneliner	-	-	
1107 - F&A Module Adjustment TP/TC	-	-	
2 - BOS Products	\$892,510	\$0.3269	
2.1.1 - Inverter	\$273,024	\$0.1000	
2101 - Inverter	\$273,024	\$0.1000	
2.2.1 - Structure	\$482,930	\$0.1769	
2201 - Structure	\$446,198	\$0.1634	
2202 - Structure Ballast	\$36,732	\$0.0135	
2.3.1 - Metering & Monitoring	\$63,156	\$0.0231	
2301 - Metering & Monitoring	\$25,262	\$0.0093	
2302 - Metering & Monitoring Commissioning	\$37,894	\$0.0138	

Revised module cost per latest guidance 11/5/15 - 330W

CPS Pricing via Procurement (Robert Murphy).

Per Panelclaw quote, includes freight

ballast blocks

Assumes Single POI, labor is included in EPC number

FTC Solar Inc. © 2021 Contact Support

ATLAS Reports Projects Recent Search Projects, Reports

Home Alameda - Berkeley

Project Info Overview Project Management Economics Price/ASP PPA/FIT COGS COGS Variance Cash Flows - Forecast Cash Flows - Actuals Forecast - Transactions Budget v Actuals Invoices Payments Commitments/POs Journals Design Other Tools Contacts

Revision: Current Revision New Revision Options Export Data Upload

Revision #400: By Philip Lonappan on 10/26/2021 9:31 AM (Eastern Daylight Time)

COGS line items

Cash outflow amount for the month

Category	Total Forecast	Jun 2022	Jul 2022	Aug 2022	Sep 2022	Oct 2022	Nov 2022	Dec 2022	Jan 2023	Feb 2023
1 - Modules	\$40,303	-	-	\$40,303	-	-	-	-	-	-
1.1 - Modules	\$40,303	-	-	\$40,303	-	-	-	-	-	-
1.1.1 - Modules	\$40,303	-	-	\$40,303	-	-	-	-	-	-
1101 - Modules	-	-	-	-	-	-	-	-	-	-
1102 - LOCOM Adjustment; Module Costs	-	-	-	-	-	-	-	-	-	-
1103 - Under Utilization	\$40,303	-	-	\$40,303	-	-	-	-	-	-
1104 - Module Release Var. Deferral	-	-	-	-	-	-	-	-	-	-
1105 - F&A Module Adjustment Warranty	-	-	-	-	-	-	-	-	-	-
1106 - F&A Module Adjustment Oneliner	-	-	-	-	-	-	-	-	-	-
1107 - F&A Module Adjustment TP/TC	-	-	-	-	-	-	-	-	-	-
2 - BOS Products	-	-	-	-	-	-	-	-	-	-
2.1 - Inverter	-	-	-	-	-	-	-	-	-	-
2.1.1 - Inverter	-	-	-	-	-	-	-	-	-	-
2101 - Inverter	-	-	-	-	-	-	-	-	-	-
2.2 - Structure	-	-	-	-	-	-	-	-	-	-
2.2.1 - Structure	-	-	-	-	-	-	-	-	-	-
2201 - Structure	-	-	-	-	-	-	-	-	-	-
2202 - Structure Ballast	-	-	-	-	-	-	-	-	-	-
2.3 - Metering & Monitoring	-	-	-	-	-	-	-	-	-	-
2.3.1 - Metering & Monitoring	-	-	-	-	-	-	-	-	-	-
2301 - Metering & Monitoring	-	-	-	-	-	-	-	-	-	-
2302 - Metering & Monitoring Commissioning	-	-	-	-	-	-	-	-	-	-
Grand Total	\$39,027	-	-	-	-	-	-	-	-	-

FTC Solar Inc. © 2021 Contact Support

Collaboration

- Document Storage
- Data Sharing
- Track interconnection & PPA
- Notifications, Checklists
- Obligations

The screenshot displays the ATLAS software interface, which is a project management and collaboration tool. The interface is divided into several sections:

- Project Info:** This section on the left contains a sidebar with navigation links: Overview, Project Management, Milestones, Milestones Variance, Project Schedule, Documents, Project Team, Obligations, Checklist, Cases, Risks & Opportunities, Economics, Design, Other Tools, and Contacts. The 'Documents' link is highlighted, and a yellow arrow points to the 'Documents' section in the main content area.
- Documents:** This section displays a list of documents with columns for File/Folder, Version, Size KB, and Upload Date. A yellow arrow points to the 'Documents' section in the main content area.
- Checklists:** This section on the right displays a 'Checklist Template(s)' and a 'Checklist Items' table. A yellow arrow points to the 'Checklists' section in the main content area.
- PPA schedule:** This section in the center displays a 'PPA schedule' table with columns for Year and Rate. A yellow arrow points to the 'PPA schedule' section in the main content area.
- Data & document sharing:** This section on the right displays a 'Data Sharing' dialog box with a search bar and a list of contacts. A yellow arrow points to the 'Data & document sharing' section in the main content area.

The interface also includes a top navigation bar with 'Home', 'All Projects', 'All Grids', 'testshare - Philip L...', 'All Cases', 'Alameda - Berkeley', and a search bar. The bottom of the interface shows the 'FTC Solar Inc. © 2021' copyright notice.

Integration & Customization

- Integrates with other software for accounting, cloud storage, collaboration
- Customizable
- Custom grids and reports
- Custom Dashboards





Summit Ridge Energy

Jennifer Weinstein - Sr Director Corporate Operations

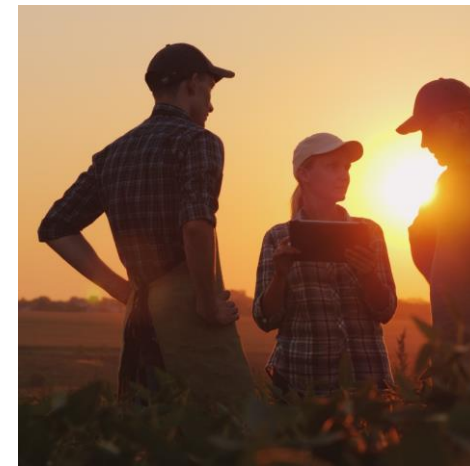


Who We Are

Summit Ridge Energy (SRE) is a leading renewable energy provider, delivering solar energy and battery storage projects to companies and communities across multiple markets

With 65 operating solar projects and over 575 MWac in our development pipeline, SRE has established a track record to deliver on every component of successful solar and battery storage projects

Founded in 2017, SRE is headquartered in Arlington, VA with over 50 employees working across its three offices located in Arlington, VA, Chicago, and New York City





Why Choose Atlas?

- Single source of truth
- No more spreadsheets
- One software for all project phases
- Transparency
- No more duplication



Schedule a Demo Today
and Start a Trial

ftcsolar.com/atlas



An aerial photograph of a large-scale solar farm. The solar panels are arranged in neat, rectangular rows across a flat, arid landscape. In the background, there are rolling hills under a sky with a warm, orange and yellow sunset glow. The foreground shows some green agricultural fields. The image is partially obscured by a dark blue curved overlay on the right side.

Questions

Schedule a Demo Today and Start a Trial
ftcsolar.com/atlas/

Three dark blue vertical bars of increasing height, positioned in the bottom right corner of the slide, against a red background.