



BYD BATTERY-MAX LITE

ONE FOR ALL



Gene from
BATTERY-BOX FAMILY



Modular Design



Modular Design

BATTERY-MAX LITE





Flexible Size Options

Extendable battery modules

MODULES	CAPACITY
4	30kWh
6	45kWh
8	60kWh
10	75kWh
12	90kWh



Flexible Size Options

Extendable battery modules

MODULES	CAPACITY
4	30kWh
6	45kWh
8	60kWh
10	75kWh
12	90kWh

Flexible Working Conditions



IP 55 Outdoor Protection

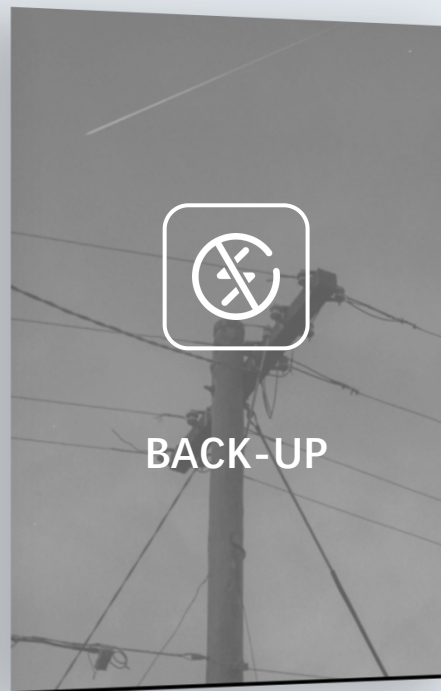


-20~55 °C AC Temperature



Wide Application & Scenarios

Wide Application & Scenarios



Easy Installation



Plug and Play
Quick modules Insert





ONE FOR ALL

Wide Compatibility for Flexible Inverters



ONE FOR ALL

Wide Compatibility for Flexible Inverters

Pioneer in Battery Industry

Coordinated Supply-Chain



Ultra-Safe

Top Performance&Life-Span

Professional Battery (DC)

ONE FOR ALL

Wide Compatibility for Flexible Inverters



Professional Battery (DC)



Professional Inverters (AC)



**Flexible size
and power**



**Flexible Applications
and functions**



**Customized
for project**



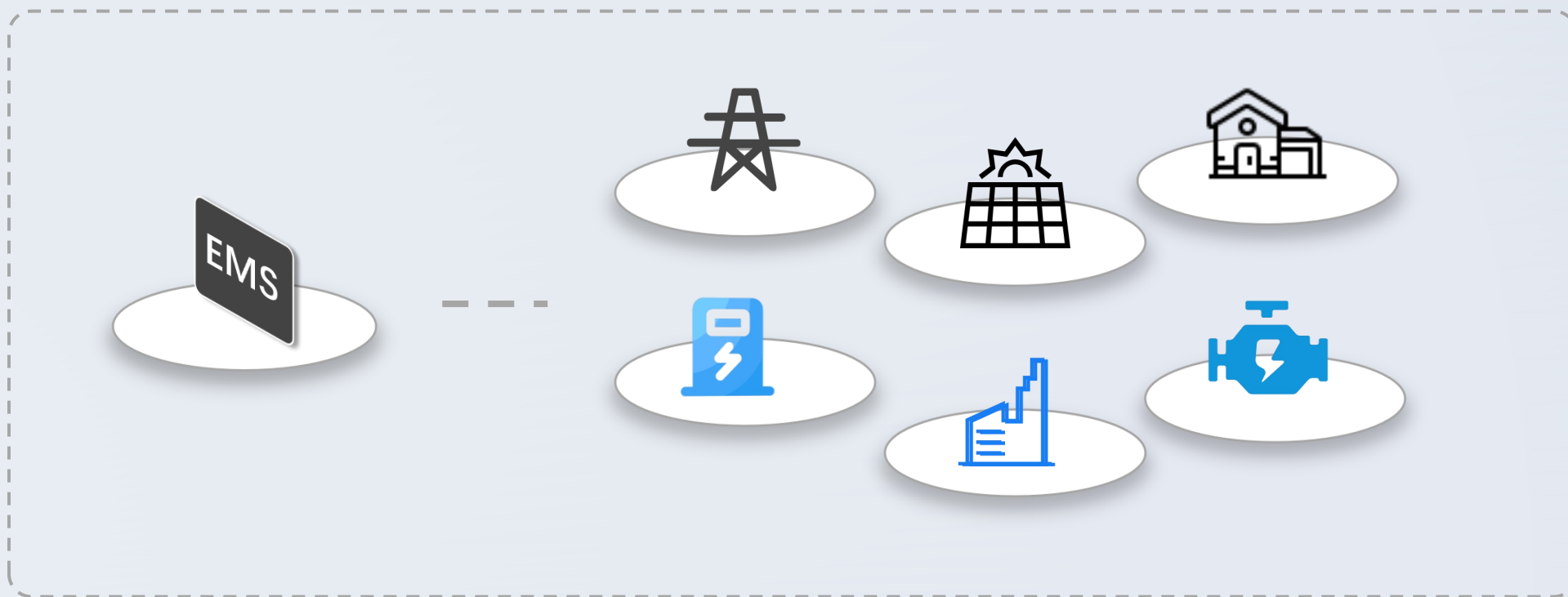
OPEN INTERFACE

Easy to be integrated in any energy system

OPEN INTERFACE

Open BMS Protocol, Easy Integration.

Energy System Network



OPEN INTERFACE

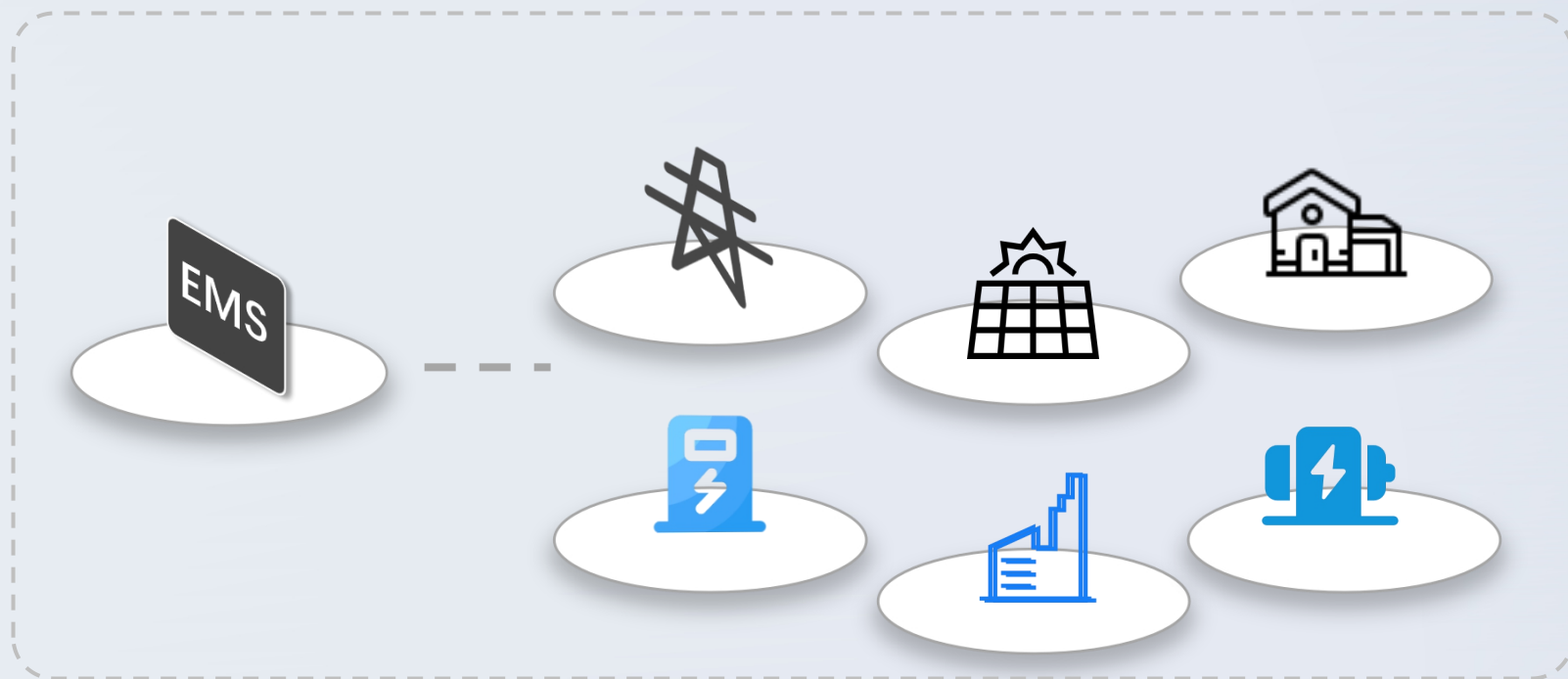
Open BMS Protocol, Easy Integration.

Open BMS Protocol



Battery-Max Lite

Energy System Network



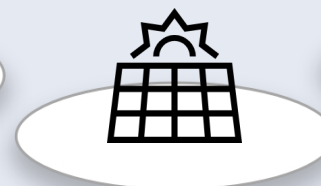
OPEN INTERFACE

Open BMS Protocol, Easy Integration.

Open Ecology



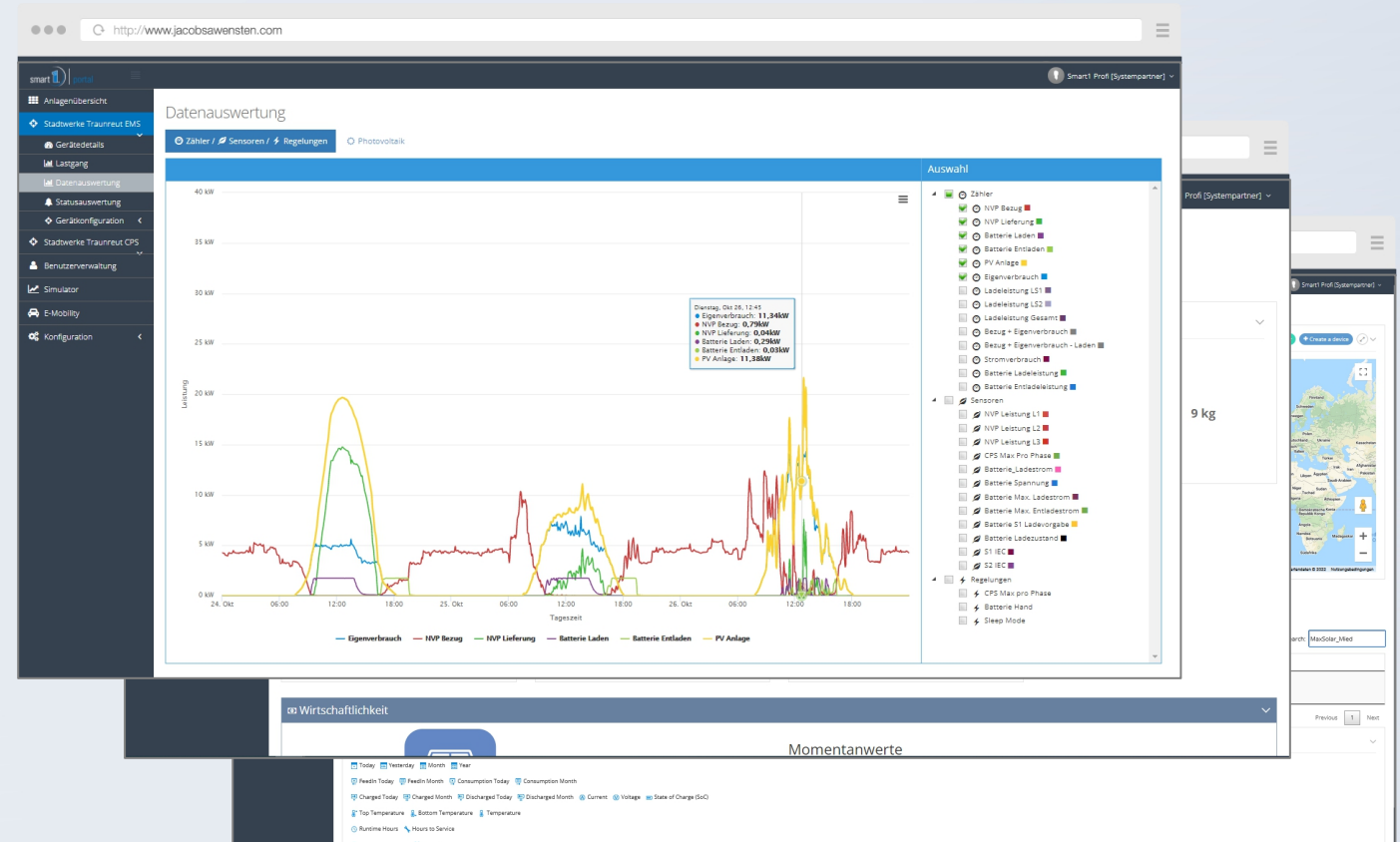
Battery-Max Lite



EASY INTEGRATION INTO ANY SYSTEM



- Easy Asset Management
- Battery Working Monitoring
- Economical Analysis





BLADE BATTERY

A 3D perspective rendering of several Blade Battery cells. The cells are depicted as long, thin, rectangular blocks with a metallic, reflective surface. They are arranged in two parallel rows, with the front row slightly offset from the back row, creating a sense of depth. The lighting highlights the edges and surfaces of the cells, emphasizing their sleek, blade-like design.

BYD LFP Battery Technology



BLADE BATTERY



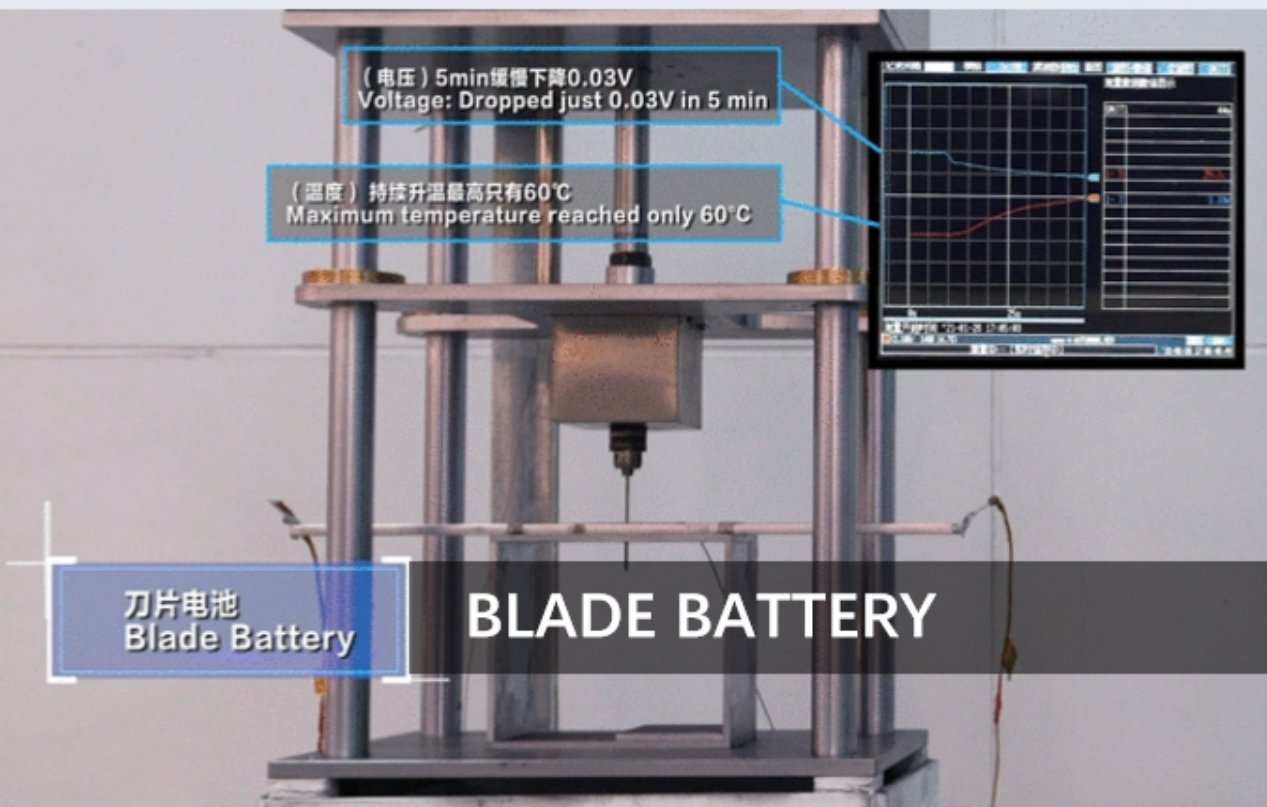
ULTRA-SAFE

A white shield icon with a gray checkmark inside, positioned behind the "ULTRA-SAFE" text.

ULTRA-SAFE

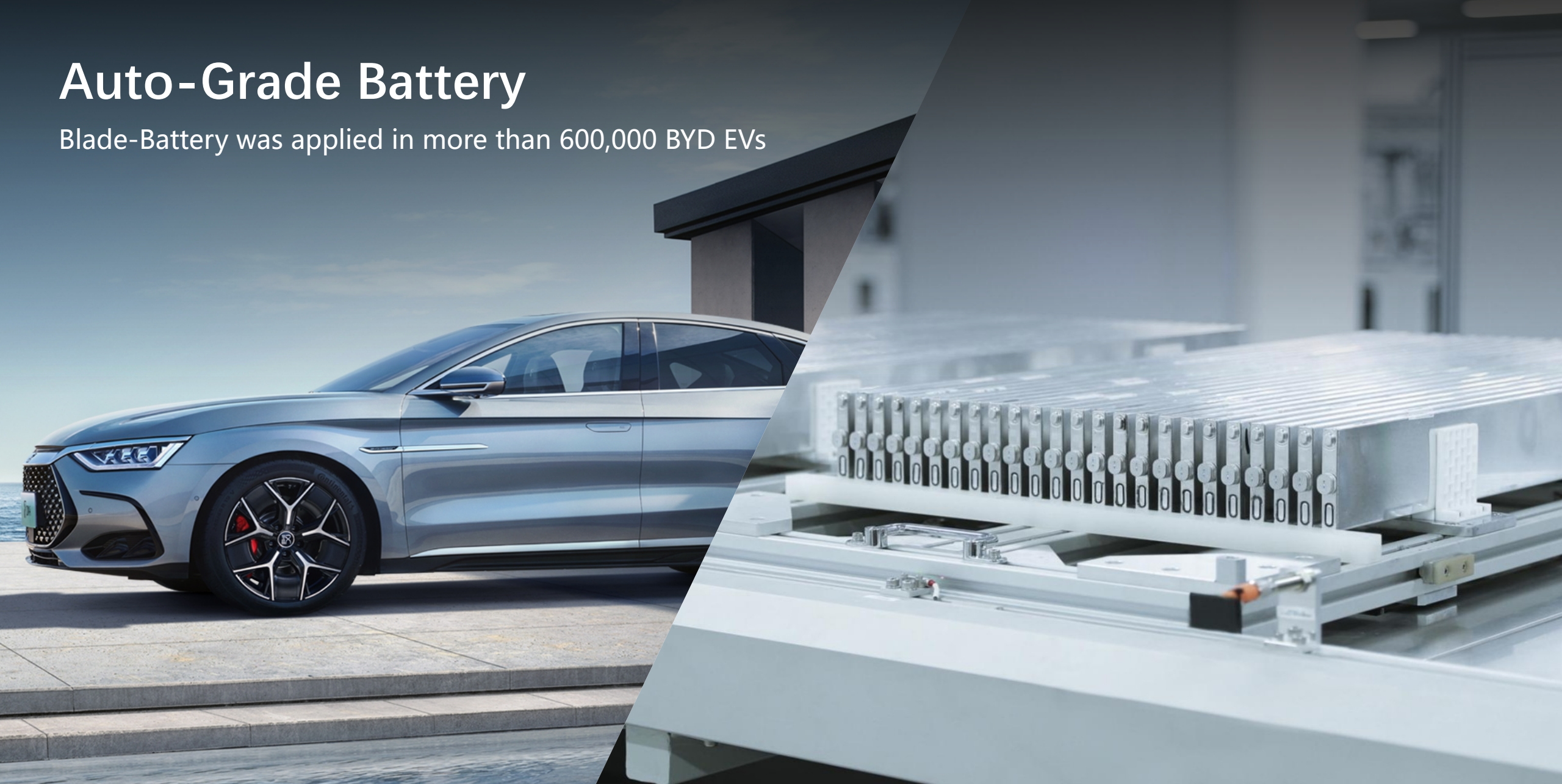


The only battery in the world passed
Nail Penetration Test



Auto-Grade Battery

Blade-Battery was applied in more than 600,000 BYD EVs



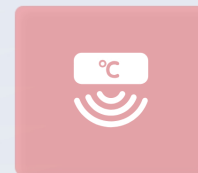


SYSTEM PROTECTION

3 extra protections on system level



Fire Supression
System



Smoke
Detection



Emergency
Shutdown

INTELLIGENT PARLLEL MANAGEMENT



INTELLIGENT PARALLEL MANAGEMENT



EASY DC PARALLEL

High Scalability up to **X64** system



Easily extend the size up to 5.7MWh

Flexible capacity for your project



Uninterrupted Maintenance Control



Uninterrupted Maintenance Control

Independent working of every unit, Seamless operation of entire cluster.





BATTERY-BOX FAMILY

**ONE
FOR
ALL**



**FLEXIBLE
SIZE**



**OPEN
INTERFACE**



**INTELLEGEN
T
PARALLEL**



**EASY TO
INSTALL**



**SEAMLESS
MAINTENANCE**



BLADE BATTERY





BYD BATTERY-MAX LITE



“

TO BE
THE BATTERY