

Huawei Slides for Podium Discussion

Challenge: How to provide a higher safety solution

Once fire occurs, the loss is huge, which severely affects personal and asset safety

Characteristics of C&I scenarios

**Personnel-intensive assets
and valuable assets**

**Potential fire hazard caused by thermal
runaway of ESS**

Causes of fire: overcharge, short circuit, high temperature,
and cell puncture



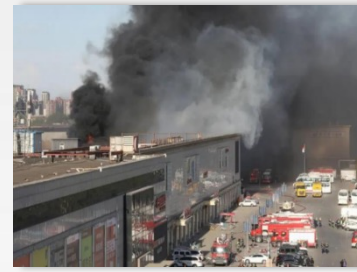
Multiple ESS fire accidents worldwide

Energy storage explosion causes fire and casualties

Australian energy storage
accident in 2021



Beijing storage and charging
station fire accident in 2021



Energy Storage Explosion
Accident in South Africa
Park in 2023



French box energy storage
explosion accident in 2023



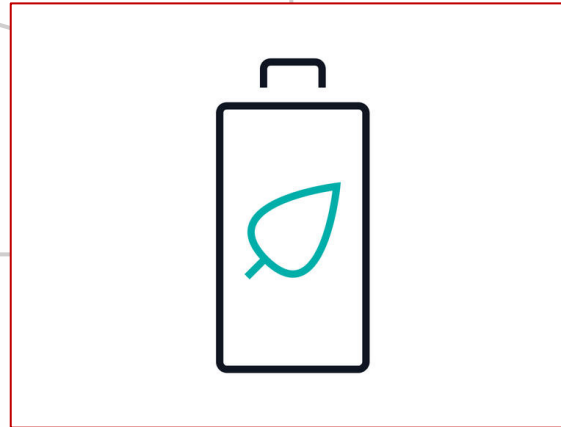
ESS Quality means

1 **Safety**
Design, En-to-end safety, Cell & Battery Pack Safety, ESS system safety, personal safety

2 **High usable energy capacity**
lower capacity degradation

3 **Reliable power supply**
proper operation in off-grid scenario, Intelligent harmonic suppression, high-quality power quality, micro-grid adaptability

4 **Multi-use mgmt.**
for higher revenue



Longer lifespan 6

Lower lifetime reduction 7
refined thermal management, reduced SOC differences, lower SOH degradation

5 **Simplified operation**
automatic SoC calibration